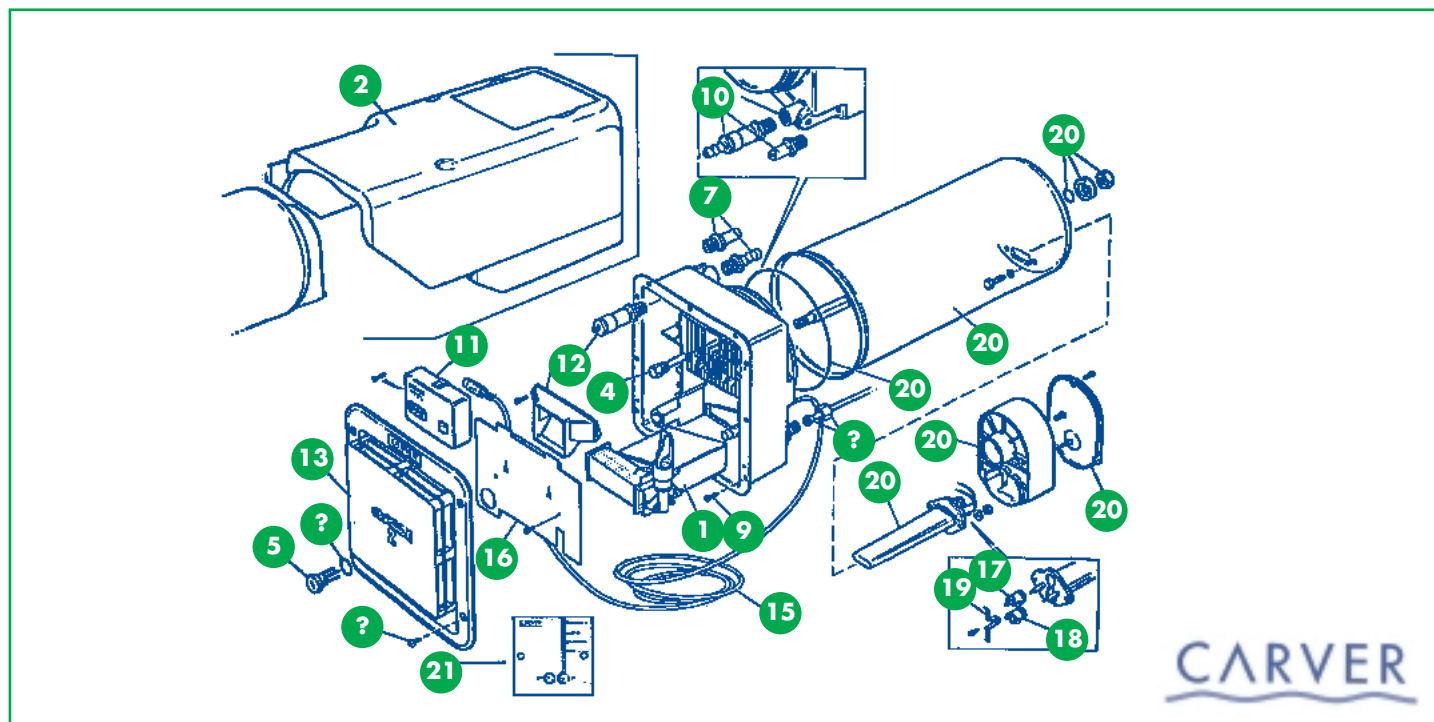


Cascade Mk 2/GE



Please Note: Wall Switch (Key No. 11), the difference between the Standard and the Remote is that the Standard Switch has an "Active" On / Off switch on the box.

Key	Description	Manufacturers No.	Burden No	Key	Description	Manufacturers No.	Burden No
1	Burner Control Module	70600-01		14	Fusible Plug	101034	532160
2	Tie Bar 12mm	102705	533100	15	Loom (Din)	605463	
2	Tie Bar 12mm - 16mm	101654		16	Inner Cover Plate Assy	102723	
3	Cascade 2 & GE Insulation Jacket	605650		17	GE Thermal Cut Out Reset	605582	
5	Drain Plug & O-Ring + Head (Pre 87)	101540	532125	18	GE Thermostat	102725	531116
5	Drain Plug & o-Ring + Head (Post 87)	101470	532130	20	GE Tank Repair Kit	109747	
6	Drain Plug o-Ring Pack 2	101022PR	532140	21	Wall Switch Rapide Beige	101761	531112
7	Hot Water Outlet Fulham Extended	101026	532165	21	Wall Switch Rapide Desert Sand	101951	533144
10	Water Inlet & Non Return Valve	101036	531130	23	Element 830w (220-230 volts)	101947	531135
11	Wall Switch Standard	101031	531106		Element O-Ring	102737	533101
12	Pressure Relief Valve Fast Drain	101039	531105		Tank O-Ring Pack 10	102742	
13	Flue Cowl Assy Casc. 2 Plus, Ivory	101583	531120		Tank O-Ring Singles	605270	
13	Flue Cowl Assy Casc. 2 Plus. White	101582	531118		9Ltr Tank GE (Tank Only)	102741	
					O-Ring Washer & Tie Rod Nuts	102743	533102
					Immersion Heater Housing	102744	
					1 amp Fuse 20 x 5mm	102746	NLA
					Relay 220/240v (Intro. 1998 onwards)	102751	533145

Note: When ordering Tank Repair Kits (Key 2) and you are fitting to a system made prior to 1991 you should order Tie Bar (Key 20 531122)

Note: When ordering Wall Switches (Key 21) the only difference between 531112 and 533144 is the wording on the switch. e.g. "Rapide" on 531112 and 533144.